

RPP-D



## Rotary Pick 'n Place<sup>®</sup>

### FEATURES AND BENEFITS

- Patented fixed pin drive
- Simple design translates to an easy installation
- High-flow vacuum valves allows for higher vacuum control
- Fixed pin arrangement creates a clean and simple picking motion and requires no lubrication
- Quick and easy product changeover means less downtime and greater machine efficiency
- Many options available, allowing customization to meet your specific needs
- Materials typically handled include: multifold coupons, labels, envelopes, parchment paper, flat cartons, glassine, packets, card stock, greeting cards, single sheet paper stock, select trays

# Rotary Pick 'n Place

## Typical Utility Requirements

- ELECTRICAL: 230 VAC 15 Amp Max
- AIR: 80 PSI (if required)
- VACUUM: Up To 10 SCFM At 20" HG (if optional pump is not purchased)

## Maximum Speeds

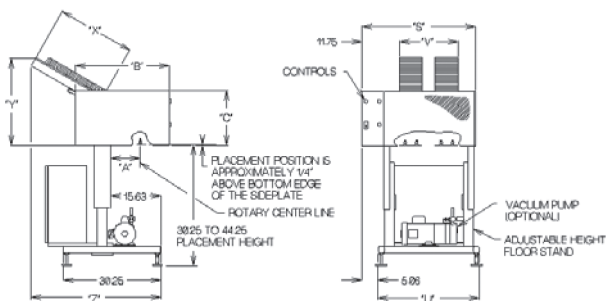
- 250 parts per minute/model 231
  - 300 parts per minute/model 221
  - 500 parts per minute/model 431
  - 600 parts per minute/model 421
- (Multiply this times the number of magazines for total speeds)

## Product Size Range

- Minimum: 1" (26mm) x 1" (26mm)
- Width: 18" (457mm) and 28" (711mm) wide magazines are available. The maximum product height is the same.

Maximum Heights By Model:

- RPP-424D 4" 102mm
- RPP-224D 6" 153mm
- RPP-434D 6" 153mm
- RPP-234D 8" 204mm



## Options Available

- Machine orientation
- 16, 30, or 48" long magazine
- System with or without buzzer
- Shutter and counter for batching
- Quick change magazine
- Timing screw
- Powered magazine indexer
- Low noise vacuum pump
- Parallel jackshaft
- Screw height adjustment
- Casters drive
- Adhesive system
- Random cycle drive
- No product-no placement
- Missed detection
- VFD drive motor
- Servo drive - following mode

BASIC UNIT

MODEL	A	B	C
222D 422D	6.19 in (157mm)	23.50 in (597mm)	13 in (330mm)
232D 432D	9.12 in (232mm)	29 in (737mm)	17 in (432mm)

MAGAZINE

NOMINAL	V	W	S	X	Y	Z
18 in	7 in (178mm)	18.50 in (470mm)	19.75 in (502mm)	16.25 in (412mm)	20.75 in (527mm)	30 in (762mm)
28 in	12 in (305mm)	23.50 in (597mm)	24.75 in (629mm)	30 in (762mm)	27 in (686mm)	43.50 in (1105mm)
				48 in (1219mm)	33 in (838mm)	57 in (1448mm)

## MGS

9900 85<sup>th</sup> Ave North, Maple Grove, MN 55369 USA  
 T (800) 790-0627  
 www.mgsmachine.com  
 info@mgsmachine.com

